

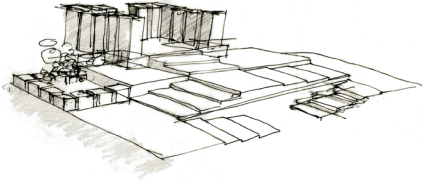
Hammonasset Ecological Center

Spring 2013

Professor Ariane Harrison

Madison, Connecticut

An ecological center sited at the tip of the Hammonasset State Park peninsula that includes preserved salt marshes and public beaches. The center serves as a monument to the site's shifting tides. The project's language of angular stairs both integrates the structure into its topographic surroundings and distinguishes it as a landmark. The steps channel water into the building footprint and form tide pools within for research. A field station on the eastern tip of the peninsula emulates the building's monumental character.



Field station concept sketch, *pen and pencil on trace paper*



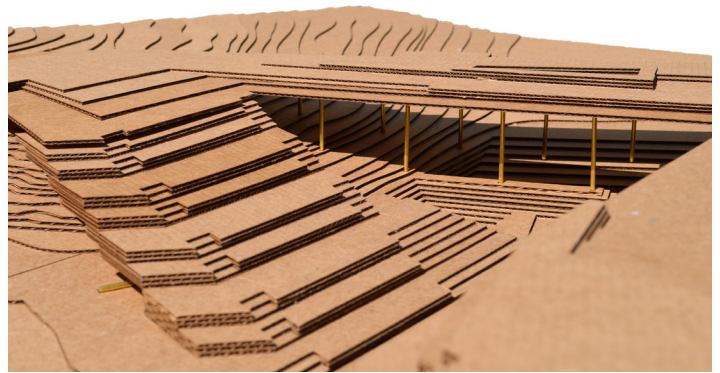
Field station study model, inspired by Indian step wells, *cast concrete*



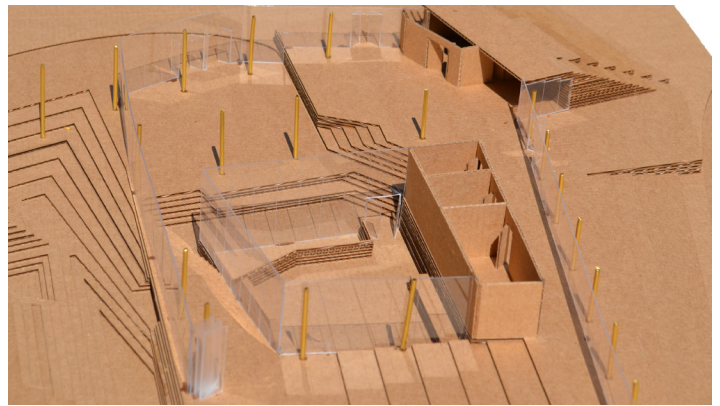
Site diagram, tracing the link between the center and its field station, *Illustrator*



An inhabitable roof allows movement from the road to the top of the adjacent mound.



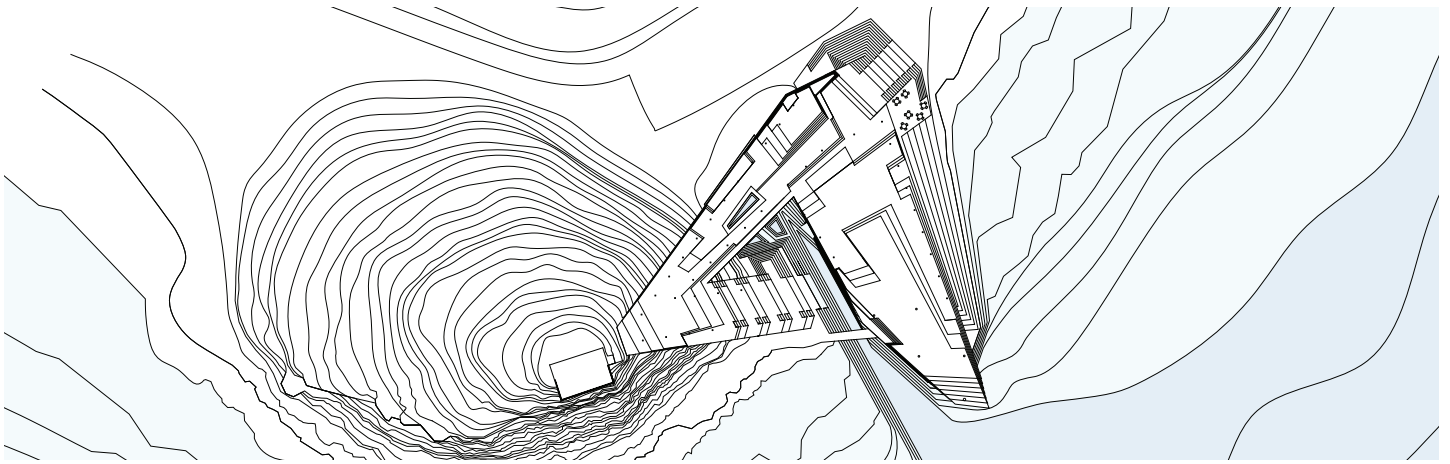
Steps to the roof act as outdoor seating.



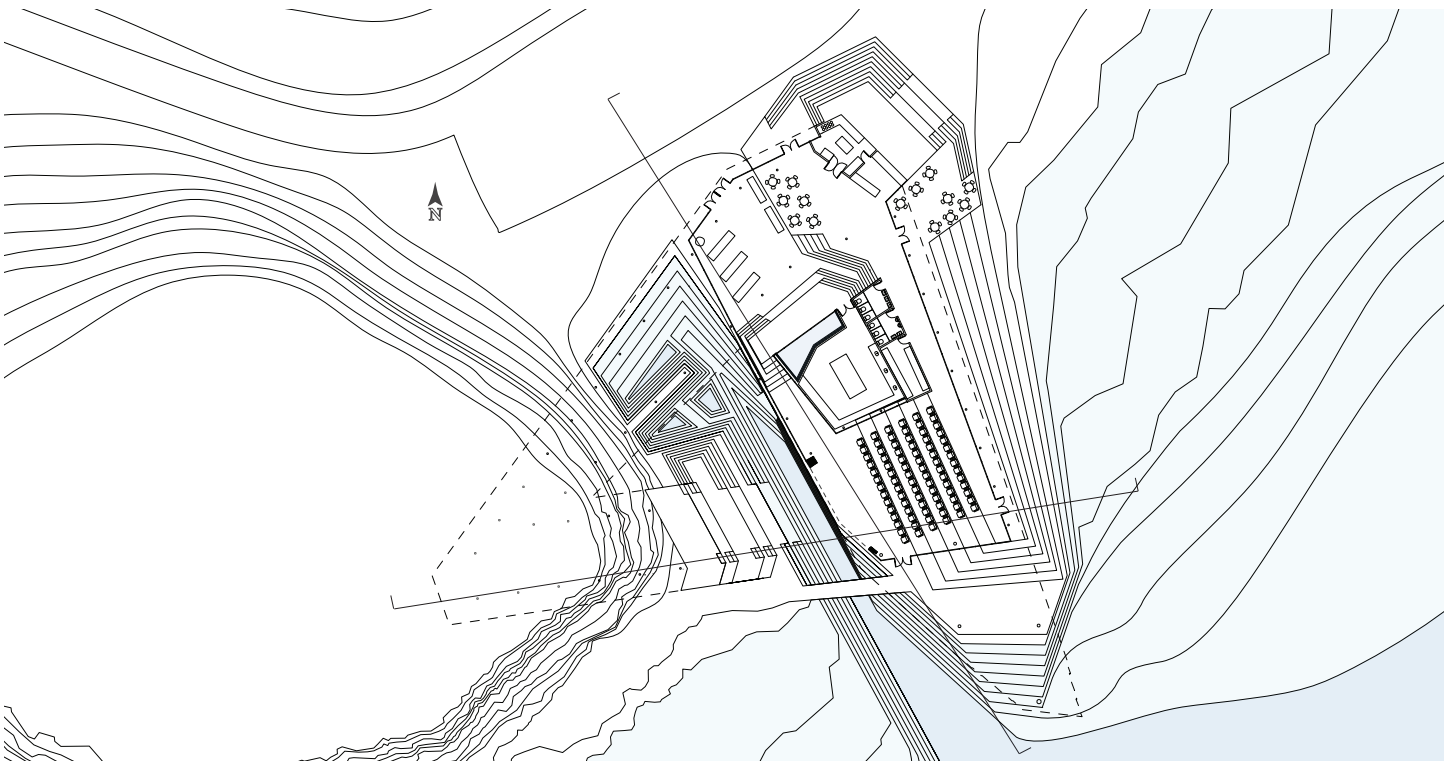
The building's changing levels allows water to enter the lab for a salt water fish nursery.



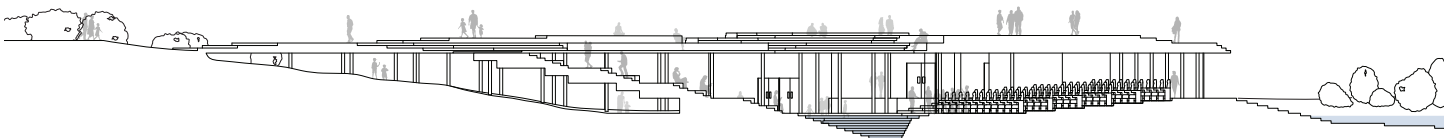
Gallery space panorama, *Rhino, Maxwell Studio, and Photoshop*



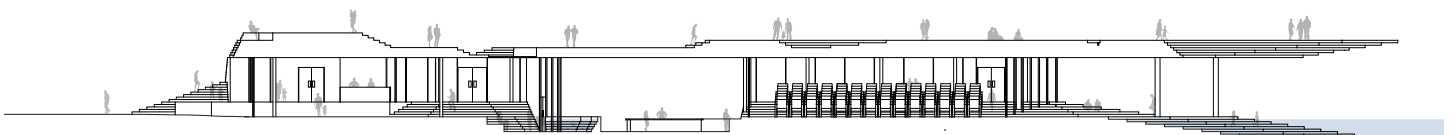
Roof plan, an inhabitable roof allows movement from the road to the peninsula's highest point, *Rhino and Illustrator*



Plan, containing gallery space, a cafe, a laboratory and an auditorium, *Rhino and Illustrator*



Transverse section, auditorium and outdoor seating both face a stage by the canal, *Rhino and Illustrator*

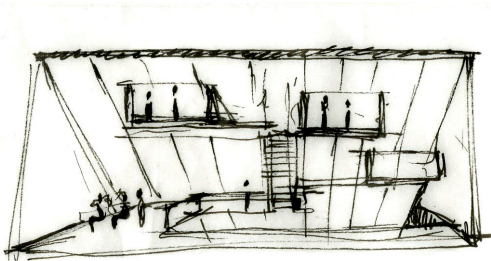
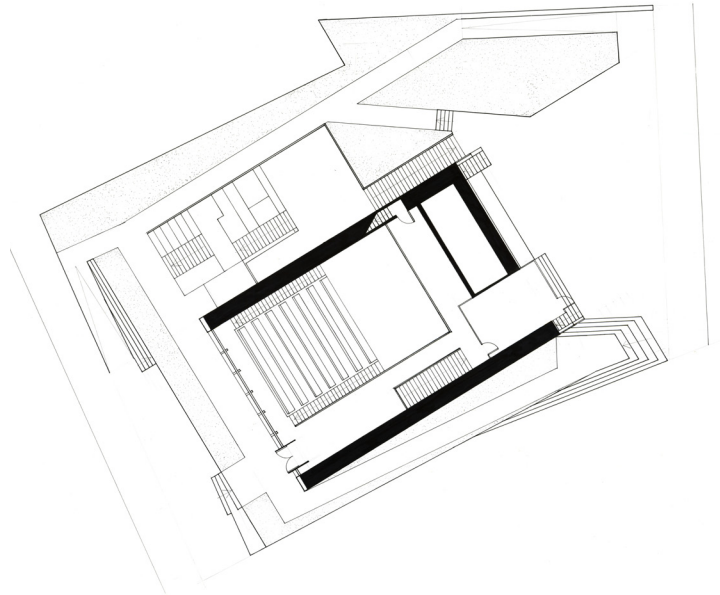


Cross section, water is channeled from the canal into the lab's salt water fish nursery, *Rhino and Illustrator*

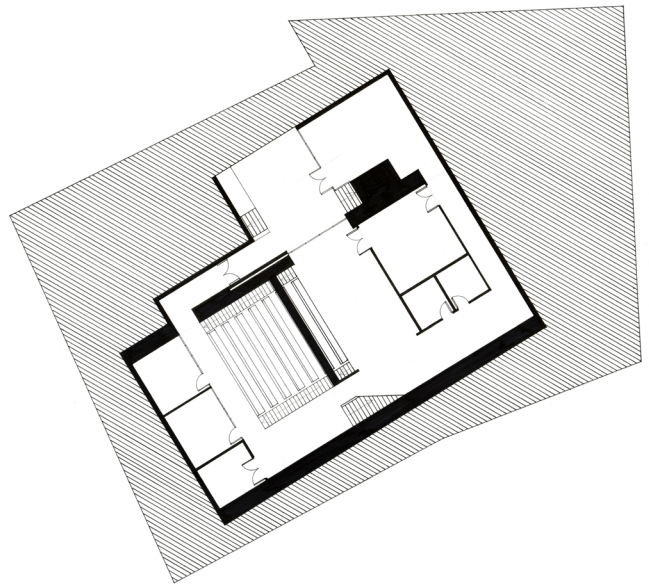
Music Haven Center

Fall 2012
Professor Turner Brooks
New Haven, Connecticut

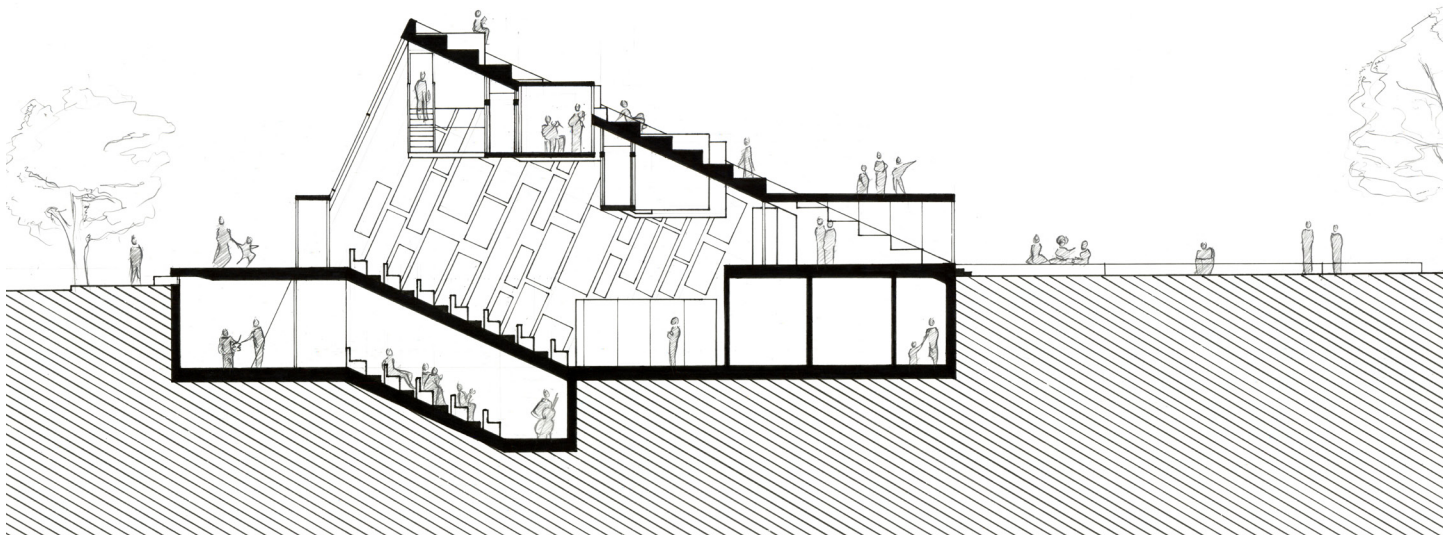
The Music Haven Center serves as a headquarters for the Music Haven string quartet. The group performs professionally and provides free music lessons for New Haven public school children. The design features large and small auditoriums, two group practice rooms and five individual practice rooms suspended in the roof; the various scales are intended to promote different levels of intimacy. The center engages its community with public seating in the building's courtyard and on the roof that face outdoor performance spaces.



Concept Sketch, ink on trace paper

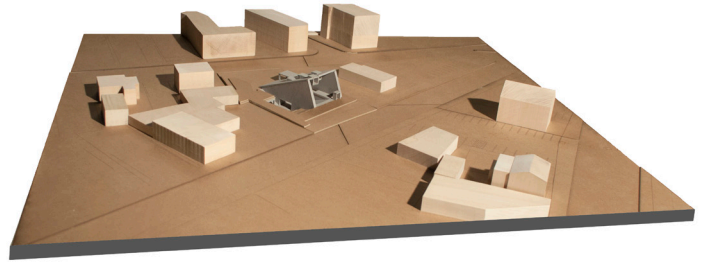


From top: Ground floor plan, Basement plan, pencil and ink on bond paper





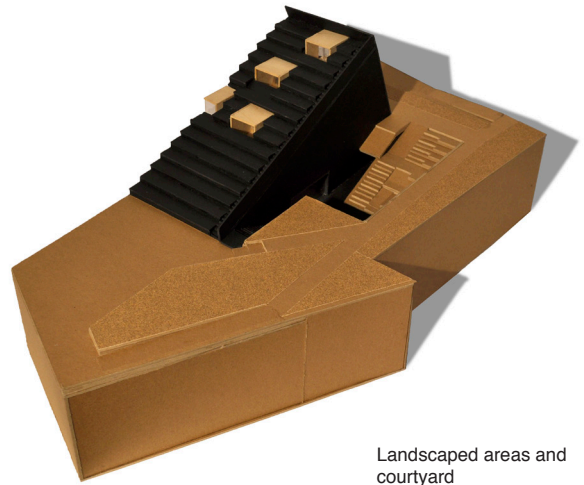
Front facade



Site model



Individual practice rooms and roof seating



Landscaped areas and courtyard

